



The SERRAT Biomass recovery mulcher consists in a pick-up rotor which lifts up the pruning of fruit trees, vineyard and branches in a second rotor to mulch it.

It can be operated by tractors from 100 to 150 HP and 150 to 180 HP with power take off on the front lift.

In the case of a standard tractor with a front power takeoff, it's possible to hitch a trailer behind to store the mulched material.

Mulcher with double reversible hydraulic feeder (system BRALAKC).

This mulcher is capable of mulching branches up to 80 - 100 mm of diameter. The size grading is adapted so that the material can be directly used in waste heat boiler of biomasse.

CHARACTERISTICS

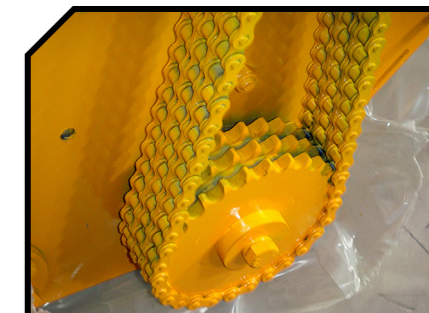
- ▶ 3 point hitch category II-III.
- ▶ Non-wear steel-plate chassis.
- ▶ Double hydraulic feeder, system BRALAKC.
- ▶ 4+4 XPC / XPB side belt transmission.
- ▶ Rotor with system RHENDUEL of Ø 450 mm.
- ▶ Triple feed chain.
- ▶ Reaction and impulse turbine with independant transmission.
- ▶ Start system HIDRAHELP.
- ▶ PTO 1.000 rpm.
- ▶ Rear height-adjustable roller Ø 210 mm.
- ▶ Cardan transmission with mechanical protection.
- ▶ It includes 6 meters of tube.
- ▶ Model built under EC Normative.
- ▶ Safety indicators visible to personnel.



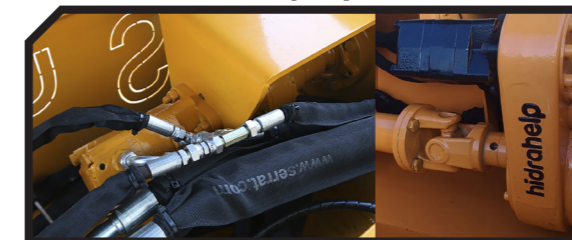
Feeder BRALAKC



Triple feed chain



Hidrahelp System



MODEL	mm	KW-HP	RHENDUEL	KG	Nº BELTS TYPE	A mm	A in	B mm	B in	C mm	C in	
T-2000	2000	112 - 150 134 - 180	4 x 10	2135	4 + 4 XPC/XPB	2480	98"	1345	53"	1390	55"	1000

OPTIONS



▶ Discharge chute

