



The SERRAT Biomass recovery mulcher consists in a pick-up rotor which lifts up the pruning of fruit trees, vineyard and branches in a second rotor to mulch it.

It can be operated by tractors from 80 to 120 HP and 130 to 140 HP with power take off on the front lift.

In the case of a standard tractor with a front power takeoff, it's possible to hitch a trailer behind to store the mulched material.

Mulcher with double reversible hydraulic feeder (system BRALAKC).

This mulcher is capable of mulching branches up to 60 mm of diameter. The size grading is adapted so that the material can be directly used in waste heat boiler of biomasse.

CHARACTERISTICS

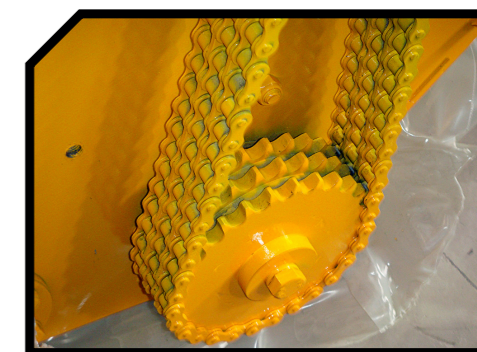
- ▶ 3 point hitch category II.
- ▶ Non-wear steel-plate chassis.
- ▶ Double hydraulic feeder, system BRALAKC.
- ▶ 3+4 XPC / XPB side belt transmission.
- ▶ Rotor with system RHENDUEL of Ø 350 mm.
- ▶ Triple feed chain.
- ▶ Reaction and impulse turbine with independant transmission.
- ▶ Start system HIDRAHELP.
- ▶ PTO 1.000 rpm.
- ▶ Height-adjustable roller.
- ▶ Cardan transmission with mechanical protection.
- ▶ It includes 6 meters of tube.
- ▶ Model built under EC Normative.



Reaction-and-impulse turbine with independant transmission



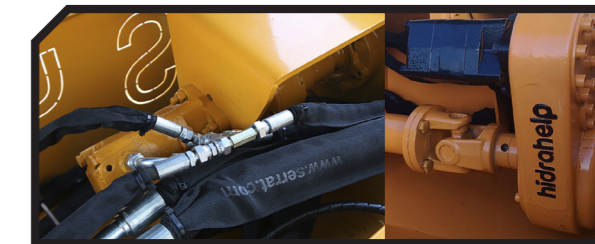
Triple feed chain



Feeder BRALAKC



Hidrahel System



MODEL	mm	KW-HP	RHENDUEL	KG	Nº BELTS TYPE	A mm	A in	B mm	B in	C mm	C in	
T-1500	1500	59 - 80 88 - 120	4 x 7	1358	3 + 4 XPC/XPB	1860	63"	1255	49"	1180	46"	1000
T-1700	1700	59 - 80 88 - 120	4 x 8	1459	3 + 4 XPC/XPB	2060	81"	1255	49"	1180	46"	1000
T-2000	2000	61 - 80 88 - 120	4 x 10	1616	3 + 4 XPC/XPB	2360	93"	1255	49"	1180	46"	1000

OPTIONS



▶ Discharge chute

