



Heavy duty forestry mulcher for tractors between 250 and 350 HP.
 Equipped with swinging hammers for the cleaning of brushwood, which favors the growth of trees, the reclamation of land, the maintenance and restoration of banks, the maintenance of areas under power lines, forestry roads, fire blocking lines.
 Equipped with rotor of fixed tooth with system **FIXE TOP**, for thick wood and stumps.
 This mulcher integrates all the necessary options for an optimal forest work.

CHARACTERISTICS

- ▶ Steel-plate chassis, thickness 15 mm.
- ▶ Rotor POLSER + of Ø 1.100 mm.
- ▶ Gearbox with RAIL BOX System (optional) with freewheel included.
- ▶ Synchronous belts transmission.
- ▶ Fixed tooth with tip in tungsten or blades DRR.
- ▶ Gearbox with Synkrodos-600.
- ▶ Steel counter hammers.
- ▶ Oscillating bearings of double row of rollers.
- ▶ Triple front safety chains.
- ▶ PTO 1.000 rpm.
- ▶ Supports of bearing rotor in steel.
- ▶ Front skid shoes.
- ▶ Rear hydraulic hood with line of steel counter hammers.
- ▶ Hydraulic pushing frame.
- ▶ Centralized greasing.
- ▶ System antiwire in rotor.
- ▶ Compact drive cover.
- ▶ Chassis internal reinforcements.
- ▶ Transmission by cardan to side belts.
- ▶ Pulleys of diameter 450 mm.
- ▶ Model built under EC Normative.
- ▶ Safety indicators visible to personnel.

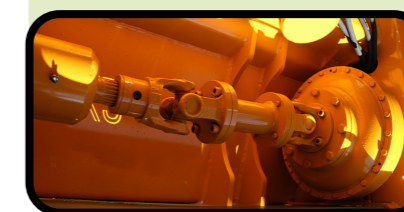


Hydraulic rear hood
 System antiwire in rotor
 Drive shaft transmission to the belts
 Centralized greasing

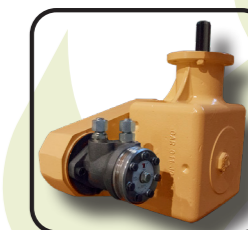


MODEL	mm	KW-HP	mm	mm	KG	Nº BELTS TYPE	Diagram Dimensions						
							A mm	A in	B mm	B in	C mm	C in	
T-2600	2600	223 - 300 447 - 600	128	64	5333	Synchronous	2705	107"	2270	89"	1700	67"	1000

OPTIONS



▶ Torque converter



▶ Hidrahelph

