

Maxiroll - Greenline



**Fully hydraulic folding
grassland roller**

6.30 and 8.30 m working width

Making the most of grassland

At the present time the area of grassland throughout the EU is increasing and there is focus on the management of this important food source. Milk producers are increasingly conscious of the importance of quality forage for improved productivity. Better forage often leads to higher yields. The basis for high quality, nutritional silage is to reduce the ash content in the form of soil and stones in the fodder. **Maxiroll Greenline** is a modern solution to grassland management with fully hydraulic folding ballast rollers, a good implement for both establishing new grassland and maintaining of existing grassland.

Genius - Simple folding operation from transport to working position



Raise the automatic transport lock



Unfold the side sections



Lower the side sections and lift the wheels



Set torsion to side sections hydr. valve in float position.

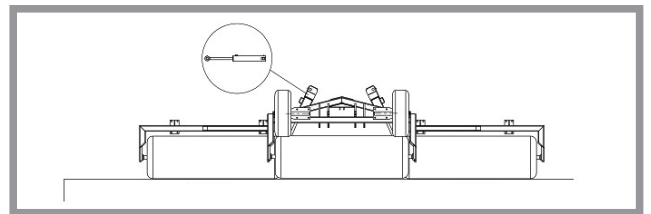
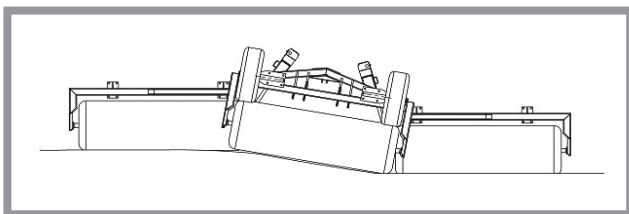
DUOFLEX System

Even under hydraulic pressure the side frames are able to individually follow the ground contours using the integral accumulator. This makes Maxiroll - Greenline extremely flexible and easy to pull.



Hydraulic Weight Transfer

Maxiroll - Greenline is fully equipped with hydraulic weight transfer as standard. The weight from the frame and wheel suspension is transferred via the hydraulic cylinders to the side frames to ensure equal pressure over the whole working width.



The substantial 710mm diameter cylinder rollers are constructed from 10mm heavy duty steel. The waterproof cylinders rotate on a continuous steel axle to ensure an even contact over the land. The weight of the roller can, by water in the cylinder, be increased by 75%. The profiled well-ends and close spacing of the roller elements reduce damage when turning and protects the soil and grass.

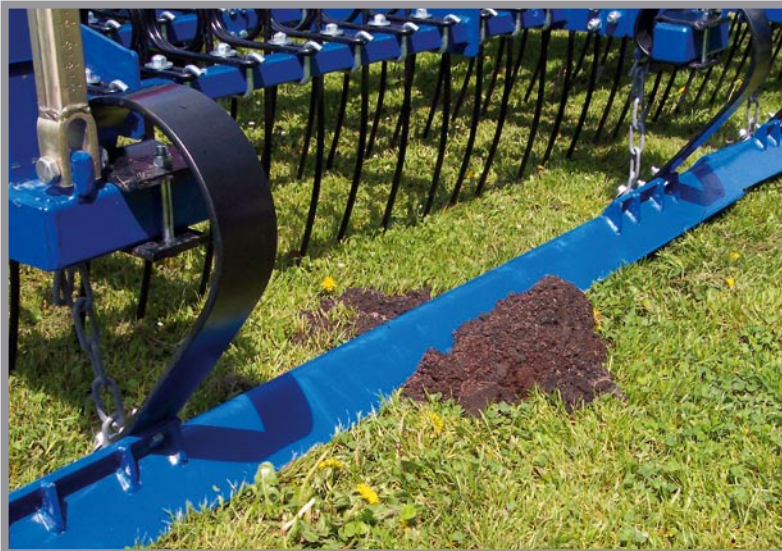
Hydraulic weedharrow



With the 2 row spring-tine weed harrow it is possible to aerate the grass. This promotes the growth of new grass. The angle is adjusted by spindles – depth hydraulic adjusted.



Mole hill board (only together with weed harrow)



A mole hill board can be mounted in front of the weed harrow. As the name indicates, it is efficient for levelling mole hills. The mole hill board consists of angle iron suspended on heavy laminated springs. The depth is incrementally adjusted by spindles.

Hydraulic crackerboard



An alternative to the weed harrow and / or the mole hill board, Greenline can be equipped with a hydraulic crackerboard which is efficient for preparation and levelling of the ground. The working angle is pre-set by spindles and the working depth hydraulically controlled.



Seeder equipment:

Pneumatic Box



Greenline can be equipped with a seed broadcaster for the application of grass and other small seeds up to 5 mm. Simple adjustment from app. 1 kg seeds per hectare to 40 kgs/ha (grass and seeds)



Seed distribution from the Pneumatic box is controlled by a rubber drive land wheel. The wheel follows the contours ensuring an accurate dosage regardless changing working speed.



The blower on the Pneumatic box is controlled from the tractor cab.

P-Box-Speed



The seed is let out by cam shafts and is distributed by 8 outlets to the baffle plates, where the seed is broadcasted .

P-Box-Speed is delivered with electric box incl. seed-quantity-control and on/off-function.



The P-Box broadcast system is similar to the Pneumatic box but without the land wheel. The box is manually adjusted according to working speed. The quantity of seed is quickly dosed



Technical specifications:

Type (width)	Weight/with water	Transport-width	Harrow		Mole hill board	Crackerboard	
			weight	Nos tines		weight	Tænder
Greenline 630	3.250/5.580 kg	2,50 m	1.005 kg	100 pcs.	170 kg	875 kg	34 pcs.
Greenline 830 *	4.200/7.540 kg	3,00 m	1.310 kg	131 pcs.	200 kg	1.110 kg	44 pcs.

Wheel assembly: 400/60x15.5 – 14 ply

* A mechanical blower is required for the PTO.

DAL-BO – SIMPLE AND ROBUST